

# ALT950

TELESCOPIC ARTICULATED LOADER

**GEHL**



## KEY FEATURES

- ✓ CVT Transmission
- ✓ Multi-Function Joystick
- ✓ Improved Visibility
- ✓ 2D Articulation
- ✓ Rear Axle Oscillation
- ✓ Spacious Cabin
- ✓ Air-Conditioned Cab
- ✓ 143 hp Deutz Engine
- ✓ 158 L/min. Hydraulic Flow
- ✓ Hydraulic Locking System Attachment Mount
- ✓ Continuous Flow
- ✓ ECO Mode

# ALT950 TELESCOPIC ARTICULATED LOADER

## SPECIFICATIONS

	IMPERIAL	METRIC	
<b>DIMENSIONS</b>	Height to Top of Cab / ROPS	8' 10"	2.7 m
	Width over Tires	7' 6"	2.29 m
	Length to Carriage	18' 9"	5.72 m
	Maximum Lifting Height (below forks)	17' 0"	5.2 m
	Maximum Dump Angle at Full Height	156°	
	Outer Turning Radius	13' 9"	4.2 m
	Articulation Angle from Center	44°	
<b>LOAD CAPACITIES</b>	Static Tipping Load with Forks Straight	10,974 lbs	4978 kg
	Static Tipping Load with Forks Full Turn	9,142 lbs	4147 kg
	Bucket Breakout	15,129 lbf	6730 daN
	Operating Weight with Bucket	18,717 lbs	8490 kg
	<b>ENGINE</b>	Engine Manufacturer	Deutz
Model / Number of Cylinders		TCD 4.1 L4 / 4	
Gross Power @ 2300 rpm		143 hp	105 kW
Displacement		1607 in <sup>3</sup>	4083 cm <sup>3</sup>
<b>HYDRAULICS</b>	Work Hydraulic System Flow	42 gal/min	158 L/min
	Drive Hydraulic System Pressure	3000 psi	270 bar
	Drive Hydraulic Reservoir Capacity	40 gal	150 L
<b>OTHER</b>	Travel Speed	25 mph	40 kph
	Fuel Tank Capacity	40 gal.	150 L
	Tires	460 / 70 R24 159A8 A580 - Alliance	

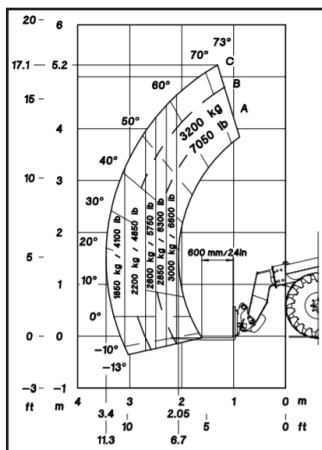


## STANDARD FEATURES

- Cabin with Heat and Air Conditioning
- Proportional Auxiliary Hydraulics with Circuit Pressure Dump
- CVT Transmission (40Kph)
- Inching Pedal
- Electronic Hand Throttle
- Digital Display with Audible and Visual Indicators
- Steering Column with Tilt and Extension Adjustments
- Limited slip differential - Front Axle
- Oscillating Rear Axle
- Rubber floor mat
- Adjustable Arm Rest
- Seven-Way Adjustable Seat
- 12-Volt Socket/USB-plug near arm rest
- Telescopic Lift Arm
- Multi-Function Joystick
- Lift/Tilt Electronic Lockout Switch
- Articulation Locking Bar (conforms to SAEJ276)
- Horn
- Side View Mirrors
- Front, Rear & Boom Worklights
- Road Lights
- ECO-Mode
- Radio
- Continuous Flow Hydraulics
- Storage Boxes
- Speed Control
- Rotating Beacon
- License Plate Holder
- Back-up Alarm

## OPTIONAL FEATURES

- LED Work Lights
- Active Comfort Ride Control (Boom Suspension)
- Rear Auxiliary Hydraulics
- Intelligent Hydraulics
- Radio (Bluetooth Hands-Free)
- Tire Options



GEHL COMPACT EQUIPMENT

West Bend, WI 53095 U.S.A. | Tel: 262-334-9461 | Fax: 262-338-7517

Gehl Company reminds users to read and understand the operator's manual before operating any equipment. Also, make sure all safety devices and shields are in place and functioning properly.

Gehl reserves the right to add improvements or make changes in specifications at any time without notice or obligation.